



Jacaranda



Chinese Elm



Chinese Elm bark texture



Acer freemanii Jeffersons Autumn Blaze



Sculptural plantings to the boundary



The Highline NY, maintains the industrial quality of the site



Highline NY



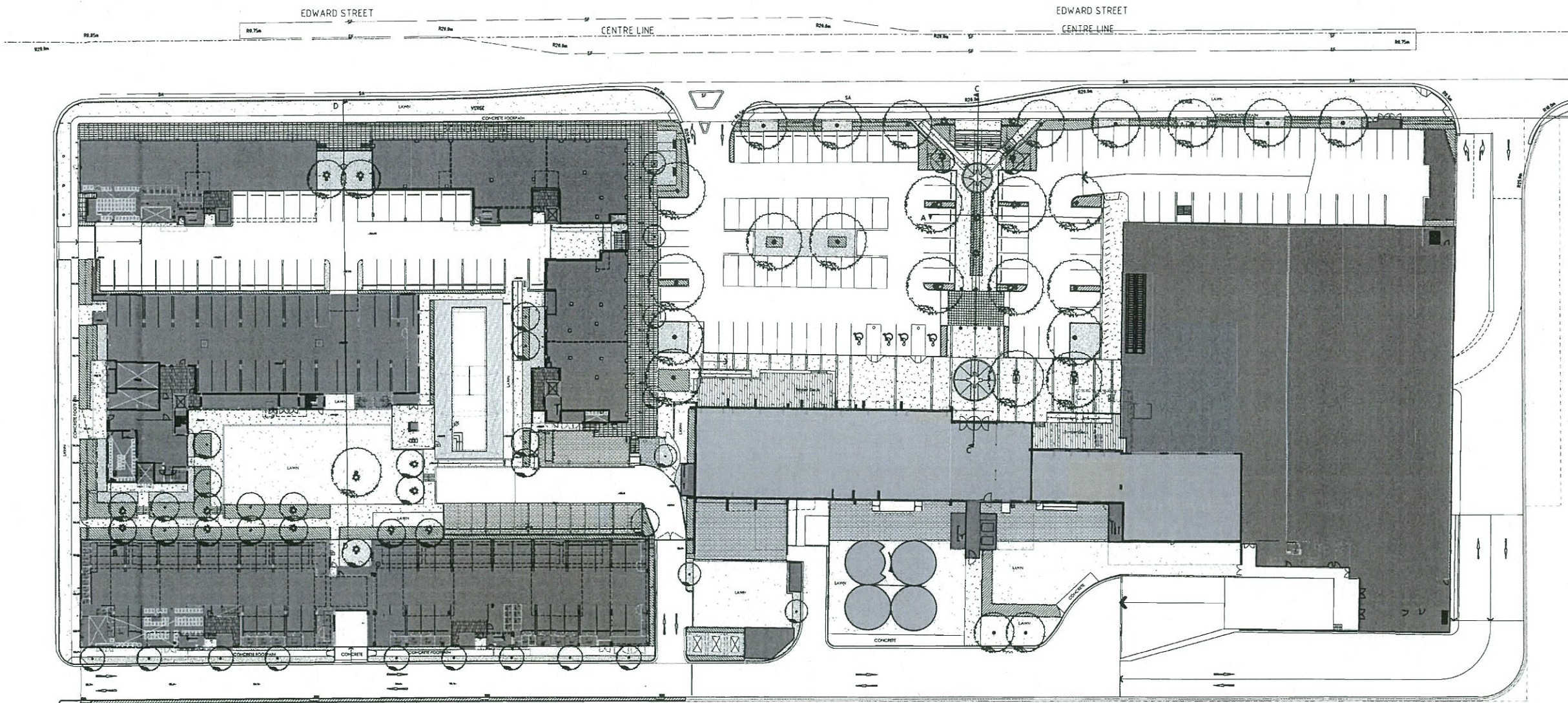
Layered textured planting with wheat like grasses



Wheat crop emerging



Emerging wheat field



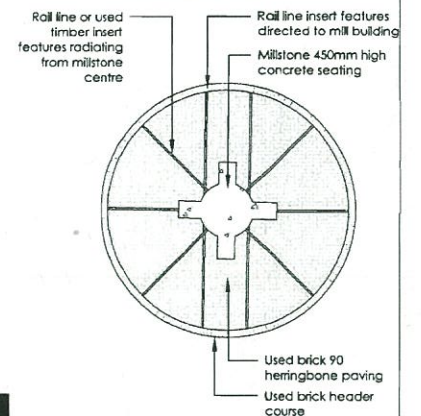
**Landscape design philosophy**  
The landscape refers to the industrial quality of the site. Long linear lines refer to the impressive scale and significance of the mill building whilst echoing the notion of emerging wheat crops. Set into the pavement are embedded rail line which refer to the history and imagery of the site.

Central to the design are two feature paving inserts with reference to the two French Burr stones which were used when the mill was operational. The embedded rail line gives direction towards the mill whilst adding to texture to the pavement and allowing the pattern of the millstone to radiate out into the landscape.

Generous 'wheat like' textural planting bands break the pavement up and large scale trees create a grid across the site. Bollards and flag poles define the pedestrian crossing zone. Their location in the landscape lines up with the impressive posts located inside the mill. The flags are intended as stitched hessian fly bags with reference to 'waggos'.

The forecourt of the Mill features bicycle racks, bins and lighting. Oxide concrete paving bands set in salt concrete provide integral pavement patterning across the front of the Mill building. For the new buildings on site, the pavement material is the same, but is simplified, to acknowledge the hierarchy of the mill building.

The residential precinct of the project features a sculptural element at the Edward Street level to acknowledge the Red Lion that once stood in this area. Relics from the hotel and interpretation regarding this are included in this space. The private residential landscape areas feature the same long linear lines as the Mill precinct, but includes different materials and plantings. Larger defined areas of lawn and shade trees are located to the southern end of the landscape spine.



Typical 'Millstone' Detail  
Scale 1:100

**The Murrumbidgee Milling Company**  
Wagga Wagga  
"There was but one flour. The flour MUST be the best. And a select one should be chosen who use it will testify to the perfect satisfaction it gives."  
Murrumbidgee Milling Co. Ltd.  
Advert/Signment. 1927



Simple elegant bench seat; revised from custom furniture



Salted concrete to retain industrial texture; with no art inlays



Embedded rail line on site; no Change



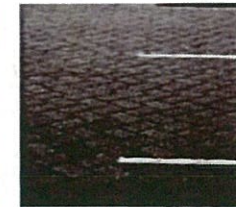
Feature pavement: used brick sourced from site; revised from proposed art components in paving



Feature pavement banding to mill forecourt; revised from art components



Stabilised decomposed granite to tree pits; revised from corten steel grates



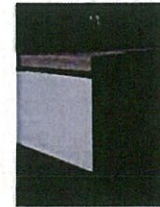
Permeable paving, to increase onsite water permeation; paving type added to palette



Aged timber on site; no Change



Metal on site as inspiration for signage; no Change



Rendered masonry wall with natural stone capping; image added